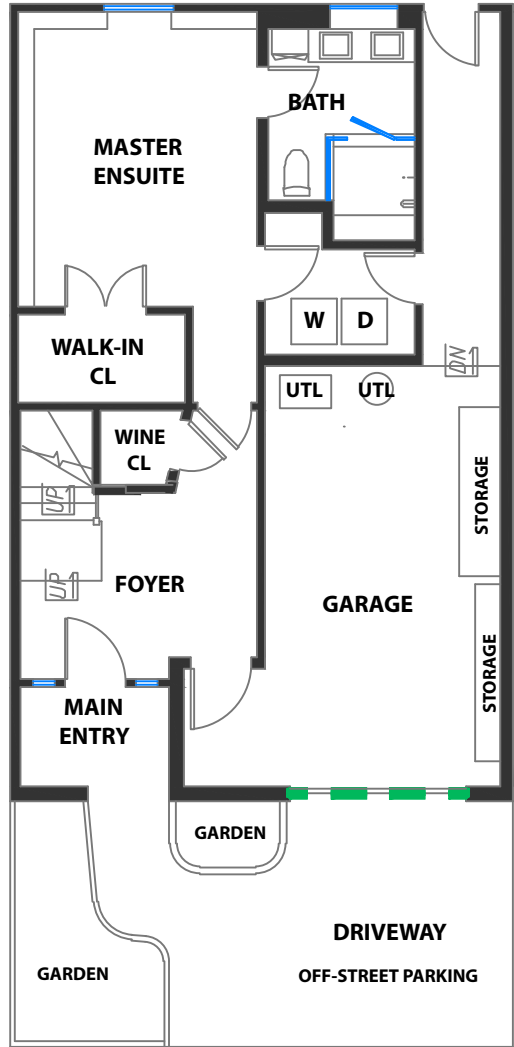
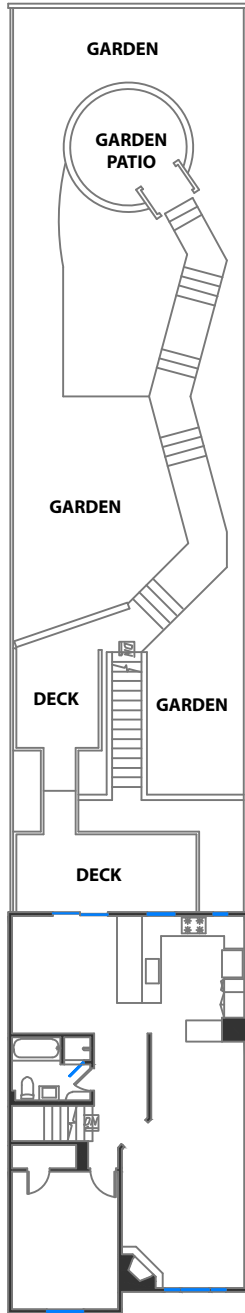


# 44 NORDHOFF STREET

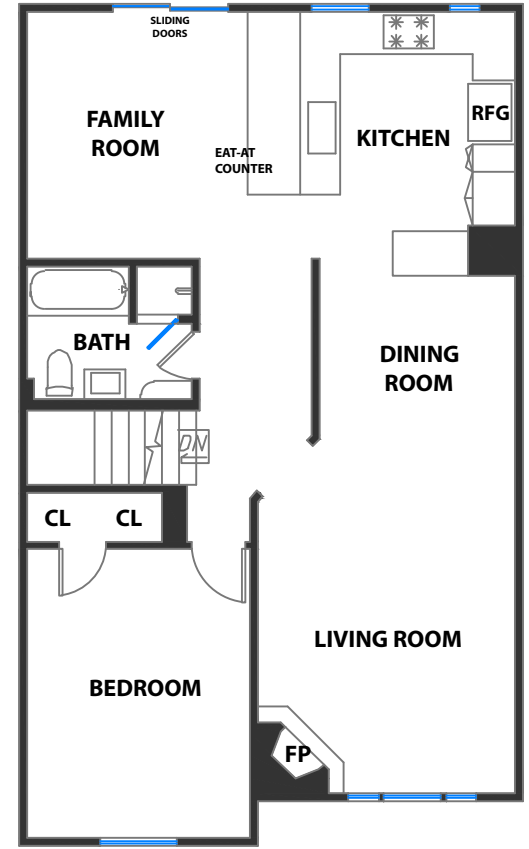
SAN FRANCISCO, CALIFORNIA

\* VIEW SHOWN BELOW - ALL TO DRAW TO SCALE

FRONT YARD / DRIVEWAY  
 BACK YARD / GARDEN PATIO  
 UPPER DECK  
 LOWER PATIO



LOWER LEVEL



UPPER LEVEL

## PROPERTY SQF INFORMATION

<b>LIVING SPACE</b>	
<b>Square Footage:</b>	<b>1574 Sq Ft*</b>
* Upper Level	1010
* Lower Level	564
<b>NON-LIVING SPACE</b>	
<b>Square Footage:</b>	<b>936 Sq Ft*</b>
* Garage	396
* Upper Deck	270
* Lower Patio	272

**APPROXIMATE TOTAL LIVING & NON-LIVING SPACE**  
**Square Footage: 2510 Sq Ft\***

RENDERING BY OPEN HOMES PHOTOGRAPHY  
 ALL MEASUREMENTS ARE APPROXIMATE. WHILE DEEMED RELIABLE, NO INFORMATION ON THESE FLOOR PLANS SHOULD BE RELIED UPON WITHOUT INDEPENDENT VERIFICATION.

